

P40 S



P40 S
P40 JUNIOR

Cupole / Domes / Dômes **Corpo / Body / Corps**

● ● ● ● ● ● ● ●

P40 S

P40 S

V DC	12	24	-	-	-	-
V AC	-	-	12	24	48 ÷ 240	
mA	60	45	110	130	40	25

P40 JUNIOR

V DC	12	24	-	-	-	-
V AC	-	-	12	24	90 ÷ 240	
mA	25	25	30	45	20	35

Codici / Codes

P40 S

12/24V ACDC	91131	91132	91133	91134	91135	91136
48/240V AC	91151	91152	91153	91154	91155	91156
12/24V ACDC	91141	91142	91143	91144	91145	91146
48/240V AC	91161	91162	91163	91164	91165	91166

P40 JUNIOR

12/24V ACDC	91221	91222	91223	91224	91225	91226
90/240V AC	91241	91242	91243	91244	91245	91246
12/24V ACDC	91231	91232	91233	91234	91235	91236
90/240V AC	91251	91252	91253	91254	91255	91256

Luce a LED multifunzione sviluppata con tecnologia multicanale. P40 S dispone di tre livelli di allarme (luce fissa, lampeggiante, strobo) selezionabili tramite contatti elettrici indipendenti.

Tensione operativa

P40 S: 12/24V ACDC, 48/240V AC +/-10%

P40 JUNIOR: 12/24V ACDC, 90/240V AC +/-10%

Caratteristiche meccaniche

Polycarbonato autoestinguente ad alta resistenza agli impatti, guarnizione o-ring in EPDM presente sulla cupola e guarnizione in poliuretano sulla base. Può essere installato a pannello tramite foro Ø30 e bloccato con l'anello di chiusura fornito.

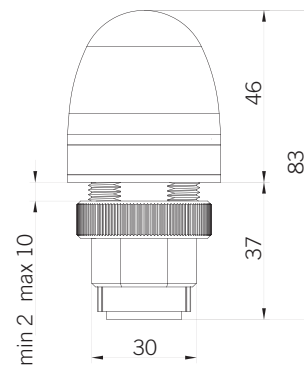
Caratteristiche luminose

4 LED ad alta luminosità. Cupola in polycarbonato con design per la diffusione luminosa sui 360°, abbinata ad una lente posizionata sulla parte alta del dispositivo al fine di migliorarne la performance frontale.

P40 S: 3 effetti luminosi (luce fissa, lampeggiante, strobo).

P40 JUNIOR: luce fissa

Certificazioni / Certifications



P40 S
P40 S JUNIOR



Multifunctional LED beacon developed with a multichannel technology. P40 S allows three different levels of alarm (steady, flashing, strobe light effect) controllable via independent electric contacts.

Voltages

P40 S: 12/24V ACDC, 48/240V AC +/-10%

P40 JUNIOR: 12/24V ACDC, 90/240V AC +/-10%

Mechanical features

Self-extinguishing PC body totally protected against vibrations, dust and atmospheric elements. EPDM o-ring on dome and polyurethane gasket on base. Can be panel mounted through a 30 mm hole and secured with the locking ring provided.

Optical features

4 bright LEDs. Polycarbonate dome with 360 degrees light-diffusion design in conjunction with a light-concentrating lens on the top of the device to maximize frontal performance.

P40 S: Three light effects (steady, flashing, strobe light effect).

P40 JUNIOR: steady light



Feu LED multifonctionnel, développé avec une technologie multicanale. P40 S permet trois niveaux d'alarme (lumière fixe, clignotante, strobo) sélectionnables par contacts électriques indépendants.

Tension d'utilisation

P40 S: 12/24V ACDC, 48/240V AC +/-10%

P40 JUNIOR: 12/24V ACDC, 90/240V AC +/-10%

Caractéristiques mécaniques

Polycarbonate autoextinguible, à haute résistance aux chocs, joint O-ring en EPDM présent sur le dôme et joint en polyuréthane sur la base. Il peut être encastré (trou de perçage 30 mm de diamètre) et sécurisé avec la bague de serrage fournie.

Caractéristiques optiques

4 LED à haute luminosité. Dôme en polycarbonate développé pour une diffusion lumineuse sur 360°, à l'aide d'une lentille positionnée sur la partie supérieure du dispositif, qui permet d'améliorer la performance optique du produit.

P40 S: Trois effets lumineux (lumière fixe, clignotante, strobo).

P40 JUNIOR: lumière fixe

P40 A LED



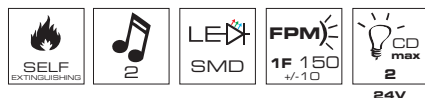
P40 A LED

85 dB max

Cupole / Domes / Dômes



Corpo / Body / Corps



P40 A LED

V DC	12	24	-	-	-	-
V AC	-	-	12	24	48 ÷ 240	
mA	25	30	80	110	30	20
dB(A)1m	85					

Codici / Codes

P40 A LED

12/24V ACDC	91181	91182	91183	91184	91185	91186
48/240V AC	91201	91202	91203	91204	91205	91206
12/24V ACDC	91191	91192	91193	91194	91195	91196
48/240V AC	91211	91212	91213	91214	91215	91216

Buzzer piezoelettrico con luce a LED, sviluppato con tecnologia multicanale. P40 A LED consente tre livelli di allarme (allerta, pre-allarme, allarme) selezionabili tramite contatti elettrici indipendenti.

Tensione operativa

12/24V ACDC, 48/240V AC +/-10%

Caratteristiche meccaniche

Polycarbonato autoestinguente ad alta resistenza agli impatti, guarnizione o-ring in EPDM presente sulla cupola e guarnizione in poliuretano sulla base. Può essere installato a pannello tramite foro Ø30 e bloccato con l'anello di chiusura fornito.

Caratteristiche luminose

3 LED ad alta luminosità. Cupola in polycarbonato trasparente.

Effetti luminosi: Luce lampeggiante, Luce lampeggiante + Suono intermittente, Luce fissa + Suono continuo.

Caratteristiche acustiche

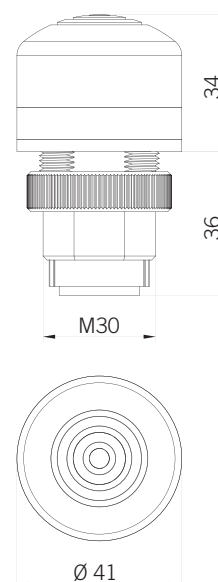
Circuito acustico con buzzer multitemperatura

Suono intermittente (pre-allarme)

Suono continuo (allarme)

Frequenza: 3500+/-100Hz

Certificazioni / Certifications



P40 A LED



Piezoelectric sounder with LED light, developed with a multichannel technology. P40 A LED allows three levels of alarm (alert, pre-alarm, alarm) controllable via independent electric contacts.

Voltages

12/24V ACDC, 48/240V AC +/-10%

Mechanical features

Self-extinguishing PC body totally protected against vibrations, dust and atmospheric elements. EPDM o-ring on dome and polyurethane gasket on base. Can be panel mounted through a 30 mm hole and secured with the locking ring provided.

Optical features

3 bright LEDs. Transparent polycarbonate dome. Light effects: Flashing light, Flashing light + Intermittent sound, Steady light + Continuous sound.

Acoustic features

Electronic circuit with multitemperature buzzer
Intermittent Sound (pre-alarm)
Continuous sound (alarm)
Sound frequency: 3500+/-100Hz



Buzzer piézoélectrique à LED, développé avec une technologie multicanale. P40 A LED permet trois niveaux d'alarme (alerte, pré-alarme, alarme) sélectionnables par contacts électriques indépendants.

Tension d'utilisation

12/24V ACDC, 48/240V AC +/-10%

Caractéristiques mécaniques

Polycarbonate autoextinguible, à haute résistance aux chocs, joint O-ring en EPDM présent sur le dôme et joint en polyuréthane sur la base. Il peut être encastré (trou de perçage 30 mm de diamètre) et sécurisé avec la bague de serrage fournie.

Caractéristiques optiques

3 LED à haute luminosité. Dôme en polycarbonate transparent.
Effets lumineux : Lumière clignotante, Lumière clignotante + Son pulsé, Lumière fixe + Son continu.

Caractéristiques acoustiques

Circuit acoustique avec buzzer multitemperatura
Son pulsé (pré-alarme)
Son continu (alarme)
Fréquence : 3500+/-100Hz

P50 A LED



P50 A LED QC M12

P50 A LED

92 dB max

Cupole / Domes / Dômes Corpo / Body / Corps

P50 A LED QC M12
P50 A LED

V DC	12 ÷ 24	-	-
V AC	-	-	12 ÷ 24
mA	45	45	90
dB(A)1m	80	88	92

Codici / Codes

P50 A LED QC M12



12/24V ACDC 91381 91382 91383 91384 91386

P50 A LED



12/24V ACDC 91341 91342 91343 91344 91346

Buzzer piezoelettrico con luce LED multifunzione, sviluppato con tecnologia multicanale. P50 A LED consente diverse modalità acustico/luminose selezionabili tramite contatti elettrici indipendenti: Luce fissa, Suono continuo, Luce fissa + Suono continuo, 2 Flash - suono/luce sync, 3 Flash - suono/luce sync, Intermittente - suono/luce sync, Random - suono/luce no sync.

Disponibili versioni con connettore a montaggio rapido QC M12 o con pressacavo M12.

Tensione operativa

12/24V ACDC +/-5%

Caratteristiche meccaniche

Polycarbonato autoestinguente ad alta resistenza agli impatti, guarnizione o-ring in EPDM presente sulla cupola e guarnizione in poliuretano sulla base. Può essere installato a pannello tramite foro Ø22 e bloccato con l'anello di chiusura fornito. Connessione elettrica tramite connettore a montaggio rapido (QC M12 4 PIN) o con pressacavo M12.

Caratteristiche luminose

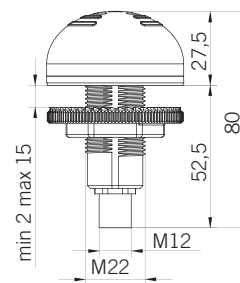
6 LED ad alta luminosità. Cupola in polycarbonato trasparente.

Caratteristiche acustiche

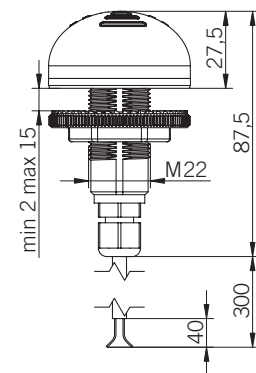
Circuito acustico con buzzer multitemperatura.

Cinque suoni disponibili. Frequenza: 3500+/-100Hz.

Certificazioni / Certifications



P50 A LED QC M12



P50 A LED



Multi-function piezoelectric sounder with LED light, developed with a multichannel technology. P50 A LED allows different sound/light effects controllable via independent electric contacts: Steady light, Continuous sound, Steady light + Continuous sound, 2 Flashes - sync sound/light, 3 Flashes - sync sound/light, Intermittent - sync sound/light, Random - no sync sound/light. Versions available with QC M12 connector or M12 cable gland.

Voltages

12/24V ACDC +/-5%

Mechanical features

Self-extinguishing PC body totally protected against vibrations, dust and atmospheric elements. EPDM o-ring on dome and polyurethane gasket on base. Can be panel mounted through a M22 hole and secured with the locking ring provided. Electrical connection through QC M12 4 PIN connector or M12 cable gland.

Optical features

6 bright LEDs. Polycarbonate dome.

Acoustic features

Electronic circuit with multitemperature buzzer. Five sounds available. Frequency: 3500+/-100Hz.



Buzzer piézoélectrique multifonctionnel à LED, développé avec une technologie multicanale. P50 A LED permet différents types d'alarme sélectionnables par contacts électriques indépendants : Lumière fixe, Son continu, Lumière fixe + Son continu, 2 Flash + son/lumière sync, 3 Flash + son/lumière sync, Pulsé - son/lumière sync, Random - son/lumière no sync. Disponible en version à connexion rapide QC M12 ou avec presse-étoupe M12.

Tension d'utilisation

12/24V ACDC +/-5%

Caractéristiques mécaniques

Polycarbonate autoextinguible, à haute résistance aux chocs, joint O-ring en EPDM présent sur le dôme et joint en polyuréthane sur la base. Il peut être encastré (trou de perçage 22 mm de diamètre) et sécurisé avec la bague de serrage fournie. Connexion électrique rapide QC M12 avec 4 contacts ou avec presse-étoupe M12.

Caractéristiques optiques

6 LED à haute luminosité. Dôme en polycarbonate.

Caractéristiques acoustiques

Circuit acoustique avec buzzer multitemperatura. Cinq sons disponibles. Fréquence : 3500+/-100Hz.

P50 S



P50 S QC M12

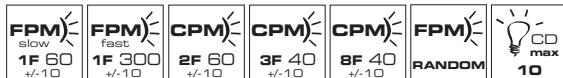


P50 S

Cupole / Domes / Dômes



Corpo / Body / Corps



P50 S QC M12 P50 S

V DC	12 ÷ 24	-	-
V AC	-	-	12 ÷ 24
mA	40	30	70
		60	

Codici / Codes

P50 S QC M12

12/24V ACDC 91361 91362 91363 91364 91366

P50 S

12/24V ACDC 91321 91322 91323 91324 91326

Luca a LED multifunzione sviluppata con tecnologia multicanale. P50 S dispone di sette effetti luminosi selezionabili tramite contatti elettrici indipendenti. Disponibili versioni con connettore a montaggio rapido QC M12 o con pressacavo M12.

Tensione operativa

12/24V ACDC +/-5%

Caratteristiche meccaniche

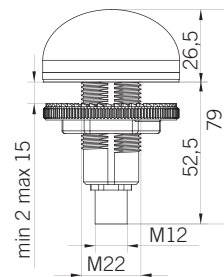
Polycarbonato autoestinguente ad alta resistenza agli impatti, guarnizione o-ring in EPDM presente sulla cupola e guarnizione in poliuretano sulla base. Può essere installato a pannello tramite foro Ø22 e bloccato con l'anello di chiusura fornito. Connessione elettrica tramite connettore a montaggio rapido (QC M12 4 PIN) o con pressacavo M12.

Caratteristiche luminose

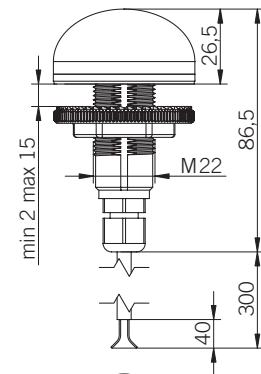
6 LED ad alta luminosità. Cupola in polycarbonato con design per la diffusione luminosa sui 360°.

Sette effetti luminosi (luce fissa, lampeggio lento, lampeggio veloce, doppio flash, triplo flash, strobo, random).

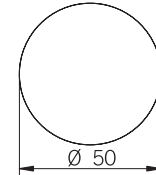
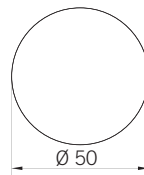
Certificazioni / Certifications



P50 S QC M12



P50 S



Multifunctional LED beacon developed with a multichannel technology. P50 S allows seven different light effects controllable via independent electric contacts. Versions available with QC M12 connector or M12 cable gland.

Voltages

12/24V ACDC +/-5%

Mechanical features

Self-extinguishing PC body totally protected against vibrations, dust and atmospheric elements. EPDM o-ring on dome and polyurethane gasket on base. Can be panel mounted through a M22 hole and secured with the locking ring provided. Electrical connection through QC M12 4 PIN connector or M12 cable gland.

Optical features

6 bright LEDs. Polycarbonate dome with 360 degrees light-diffusion design. Seven different light effects (steady light, slow flashing, fast flashing, double flash, triple flash, strobe and random).



Feu LED multifonctionnel, développé avec technologie multicanale. P50 S permet sept effets lumineux sélectionnables par contacts électriques indépendants. Disponible en version à connexion rapide QC M12 ou avec presse-étoupe M12.

Tension d'utilisation

12/24V ACDC +/-5%

Caractéristiques mécaniques

Polycarbonate autoextinguible, à haute résistance aux chocs, joint O-ring en EPDM présent sur le dôme et joint en polyuréthane sur la base. Il peut être encastré (trou de perçage 22 mm de diamètre) et sécurisé avec la bague de serrage fournie. Connexion électrique rapide QC M12 avec 4 contacts ou avec presse-étoupe M12.

Caractéristiques optiques

6 LED à haute luminosité. Dôme en polycarbonate développé pour une diffusion lumineuse sur 360°. Sept effets lumineux (lumière fixe, lumière clignotante lente, lumière clignotante rapide, double flash, triple flash, stroboscopique, aléatoire).

P50 RGB

Multicolor LED beacon developed with a multichannel technology. **P50 RGB** allows steady light in seven different colors. **P50 RGB A**: Multicolor LED sounder providing a continuous sound.

Versions available with QC M12 connector or M12 cable gland.

Voltages

24V ACDC +/-10%

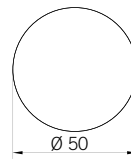
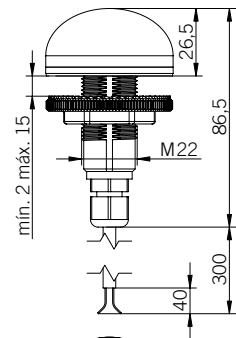
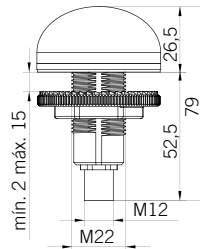
Mechanical features

Self-extinguishing PC body totally protected against vibrations, dust and atmospheric elements. EPDM o-ring on dome and polyuretanic gasket on base. Can be panel mounted through a M22 hole and secured with the locking ring provided. Electrical connection through QC M12 4 PIN connector or M12 cable gland.

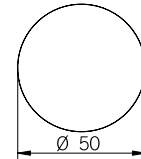
Optical features

6 bright **RGB** LEDs. Polycarbonate opaline dome for a smooth coloring of the device according to the selected color. Steady light in different colors (white, red, yellow, green, magenta, blue).

Certifications



P50 RGB QC M12



P50 RGB



P50 RGB QC M12



P50 RGB

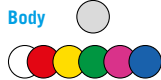
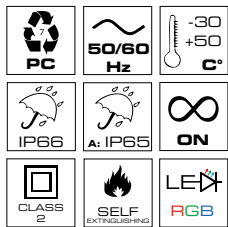


P50 RGB A QC M12



P50 RGB A

80 dB max.



Codes

P50 RGB QC M12

24V DC 91430

P50 RGB 24V DC 91379

Codes

P50 RGB A QC M12

24V DC 91429

P50 RGB A 24V DC 91380

